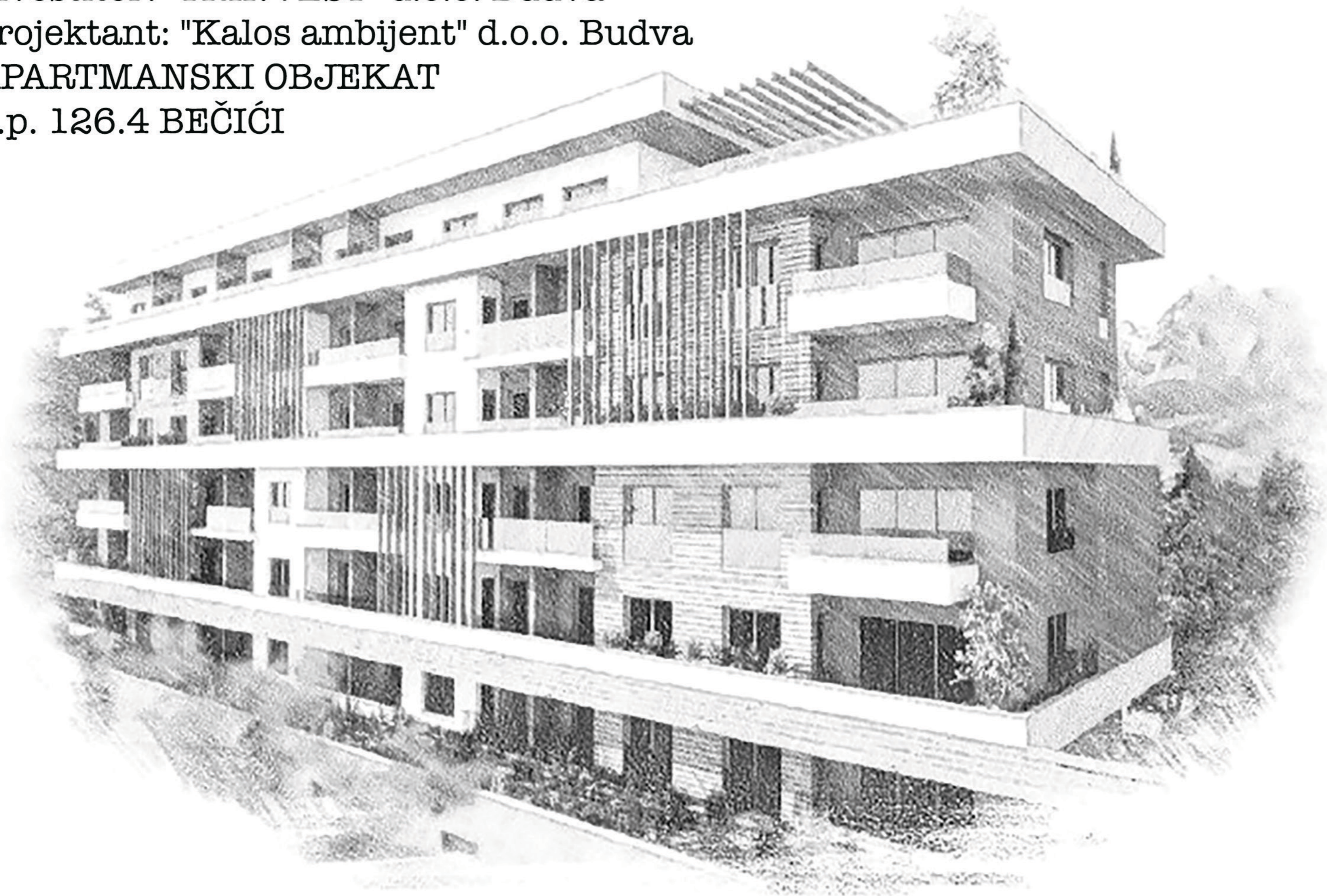


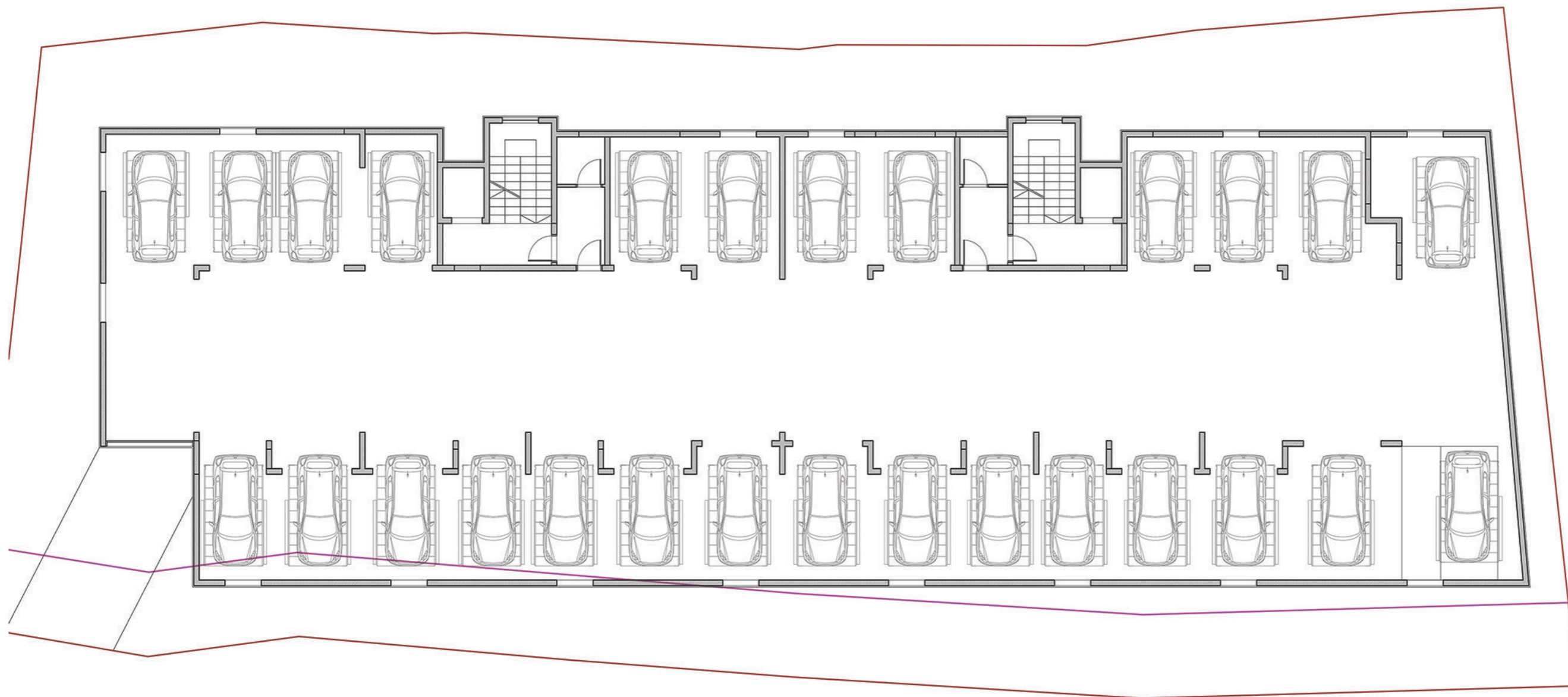
investitor: "TRINVEST" d.o.o. Budva
projektant: "Kalos ambijent" d.o.o. Budva
APARTMANSKI OBJEKAT
u.p. 126.4 BEČIĆI



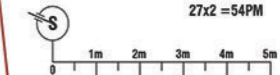




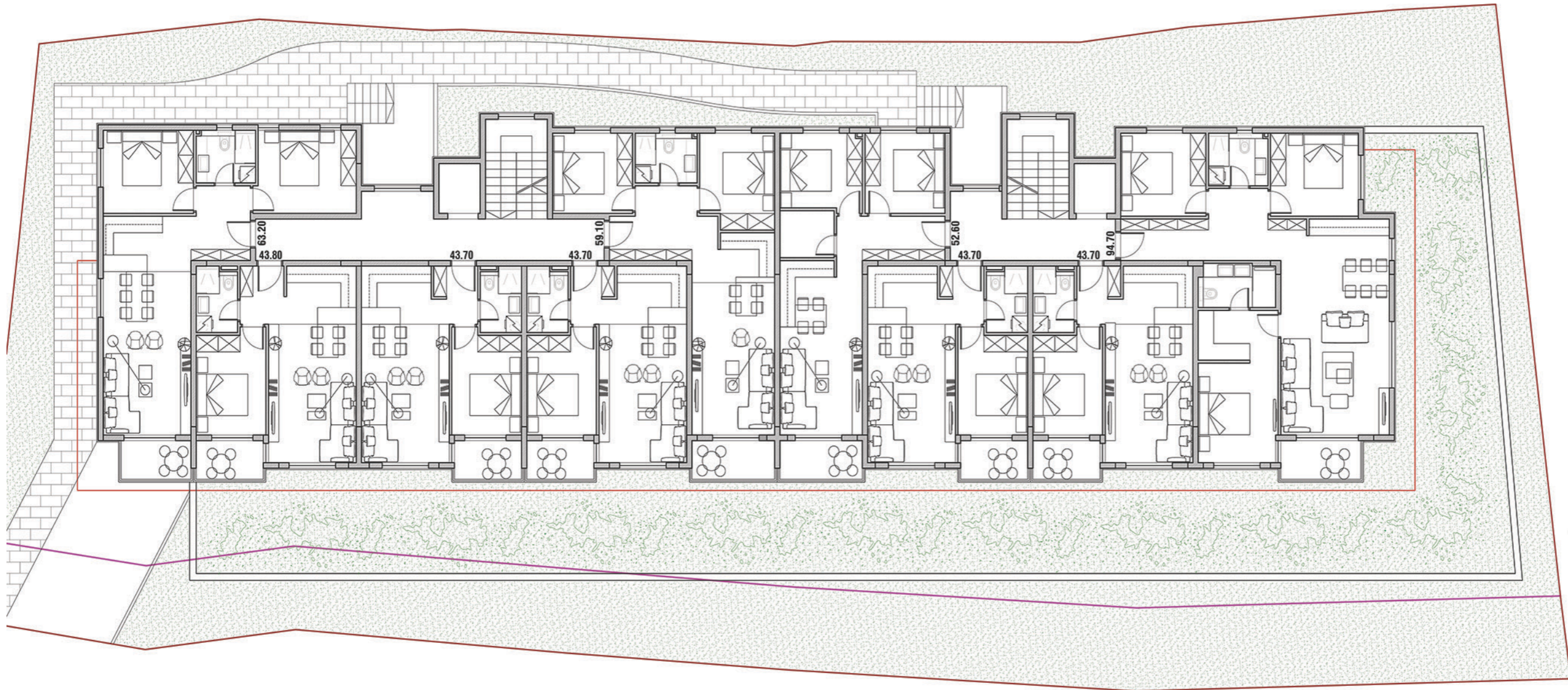




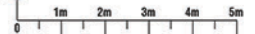
GARAŽA
r=1:100
27x2=54PM

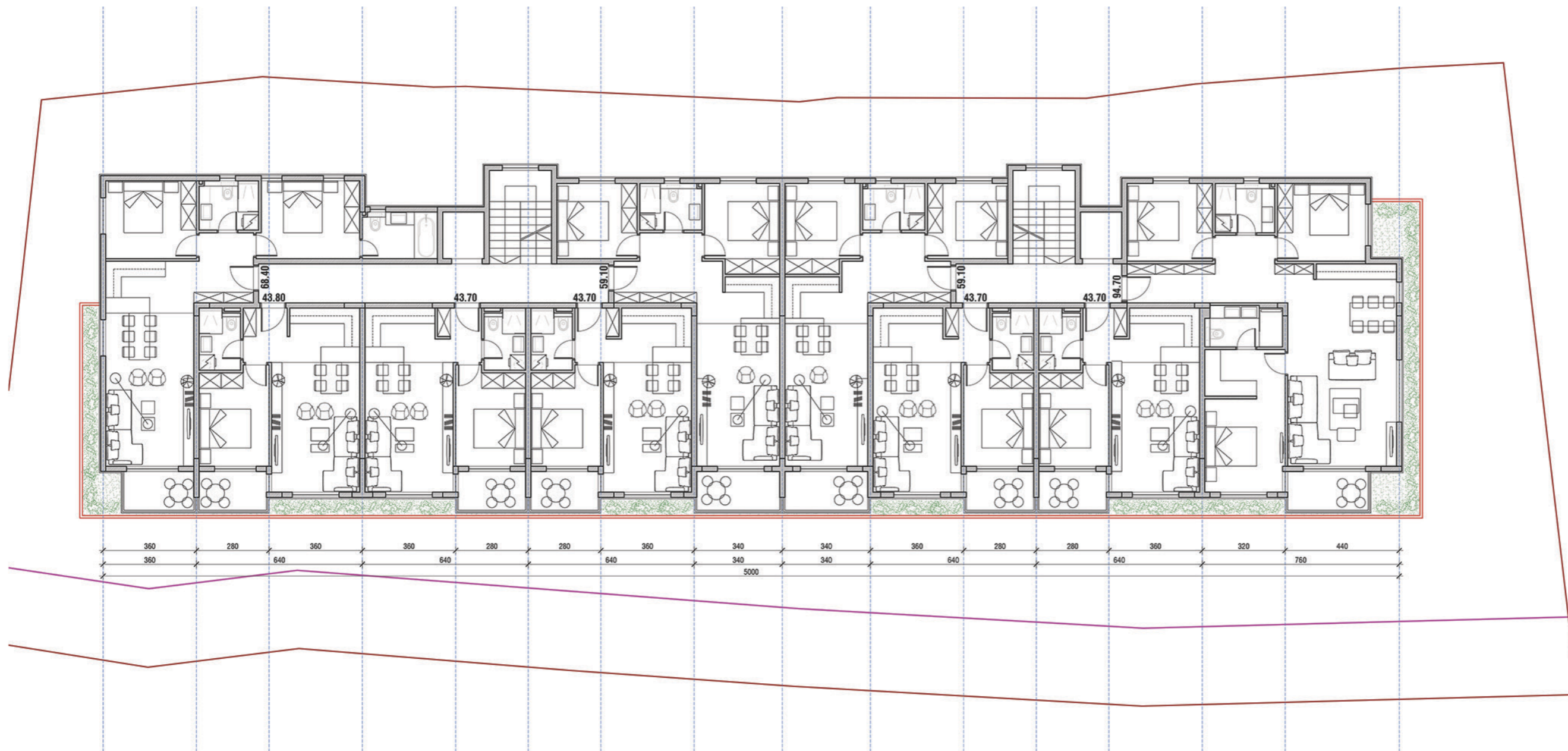


A scale bar showing 0, 1m, 2m, 3m, 4m, and 5m. A north arrow is located to the left of the scale bar, pointing towards the top of the page.



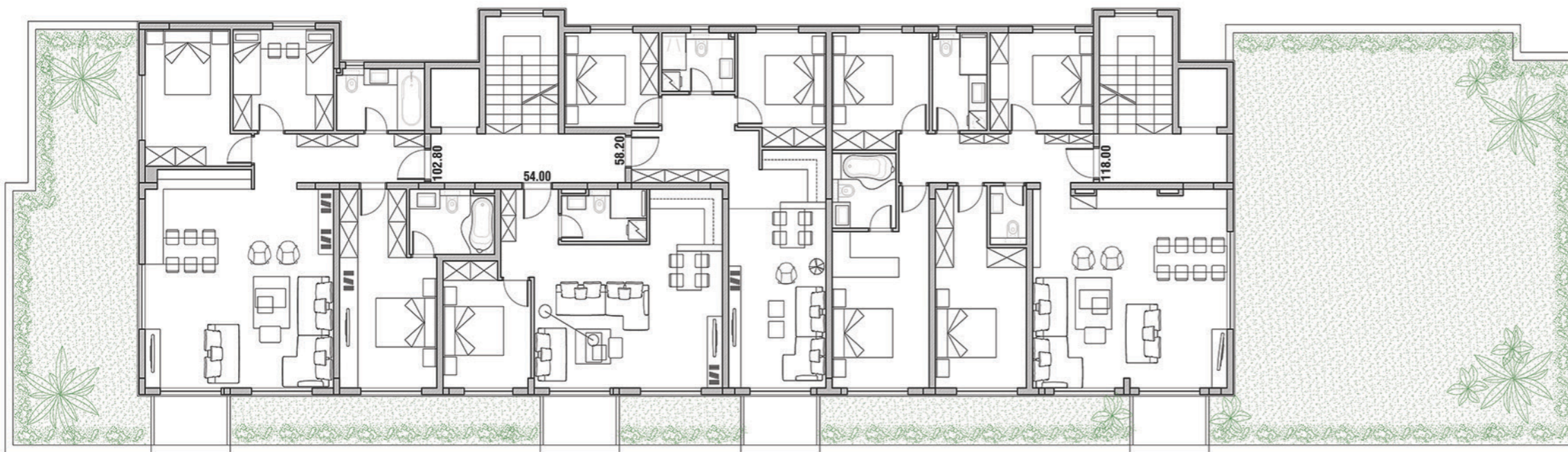
PRIZEMLJE
r=1:100
bruto 620.70m² **21%** +230m²
neto 488.20m²





I, II, III i IV SPRAT
 r=1:100
 bruto 630.08m² 20% +36m²
 neto 499.50m²





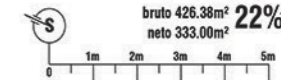
BRGP 3567.40m²
 parcela 1343x2.66=3572.38m²

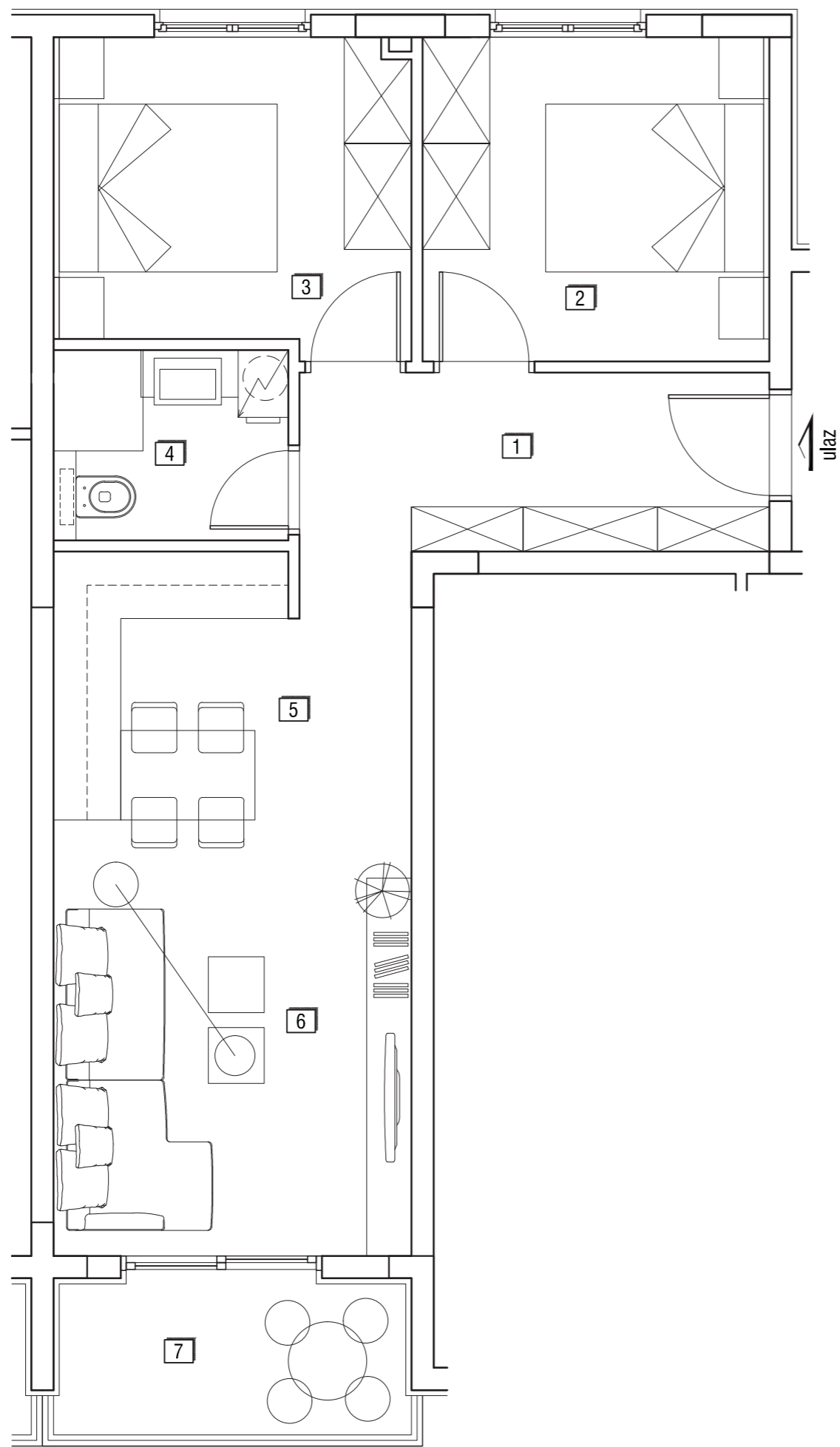
Ukupno sa G 4443.30m²
 49 apartmana
 49x1.1=53.9
 27 x 2 = 54 parking mesta

26 jednosobnih
 16 dvosobnih
 6 trosobnih
 1 četvorosobni

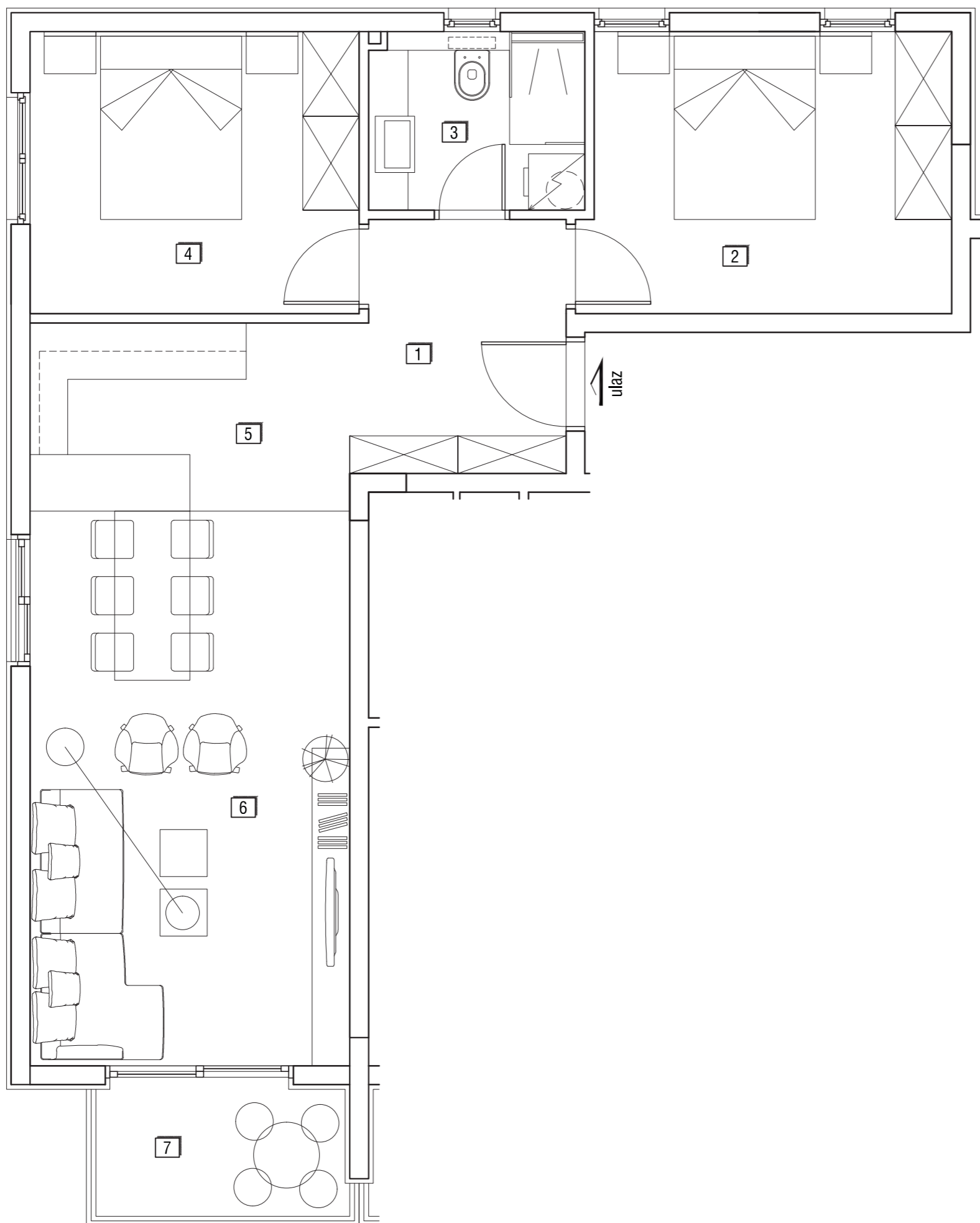
V SPRAT
 r=1:100

bruto 426.38m² 22%+226m²
 neto 333.00m²

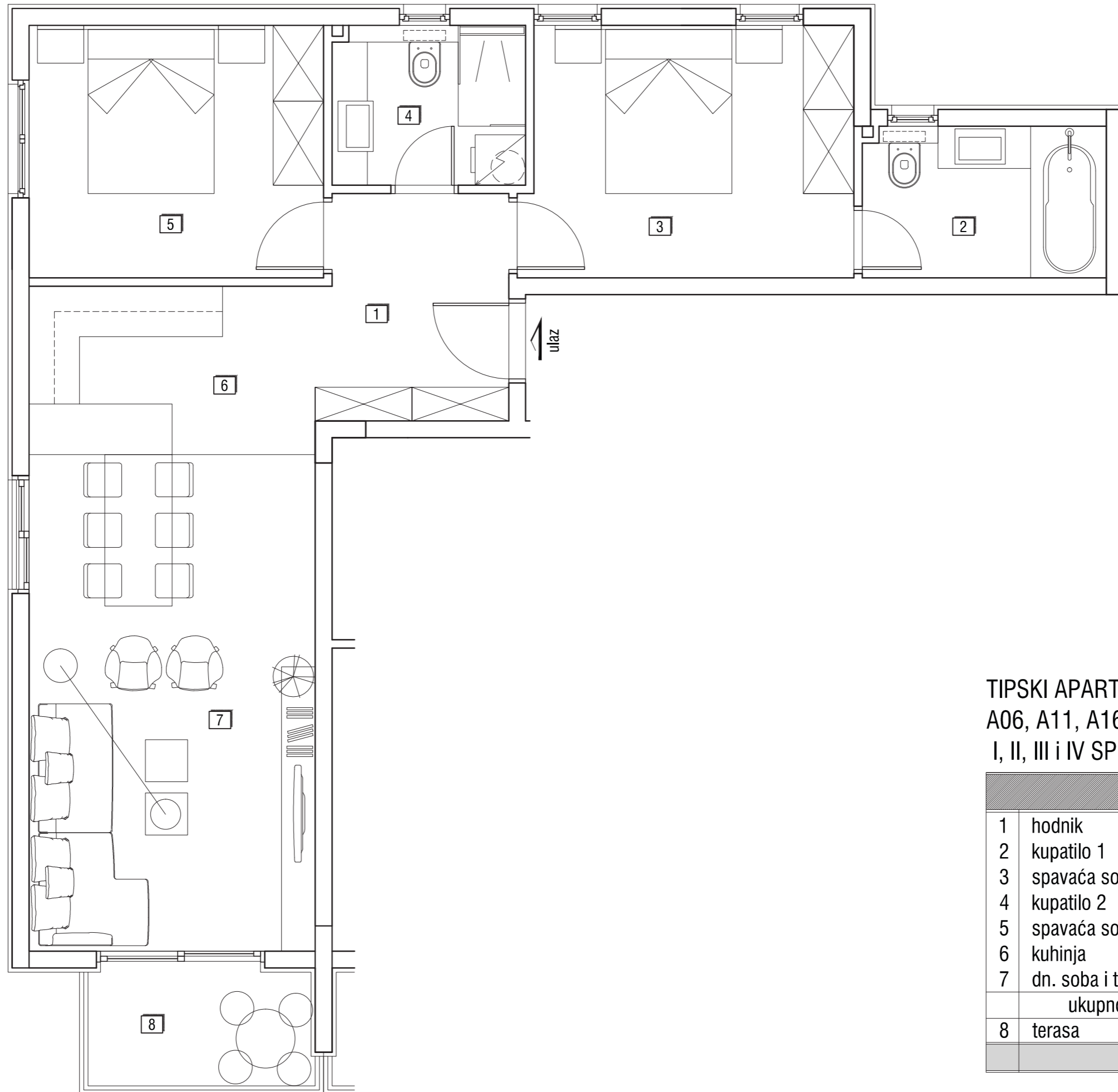




APARTMAN B01 u prizemlju			
1	hodnik	keramika	6.72
2	spavaća soba 1	parket	8.99
3	spavaća soba 2	parket	8.79
4	kupatilo	keramika	3.57
5	kuhinja i trpezarija	keramika	7.62
6	dn. soba	keramika	12.48
	ukupno bez terasa		48.17
7	terasa	keramika	4.31
	ukupno		52.48

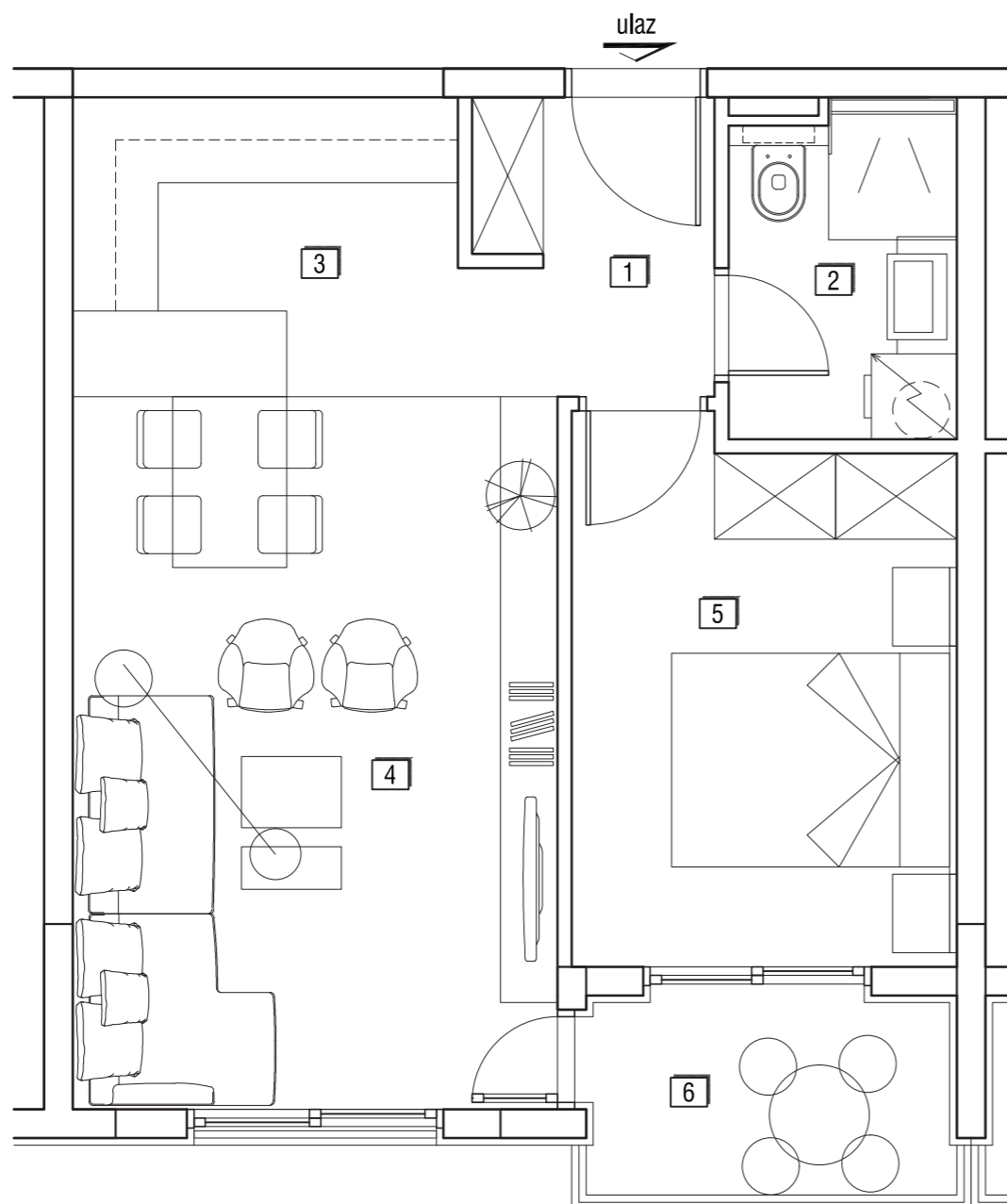


APARTMAN A01 u prizemlju			
1	hodnik	keramika	5.99
2	spavaća soba 1	parket	11.60
3	kupatilo	keramika	4.33
4	spavaća soba 2	parket	10.50
5	kuhinja	keramika	6.80
6	dn. soba i trpezarija	keramika	20.06
	ukupno bez terasa		59.28
7	terasa	keramika	3.69
	ukupno		62.97



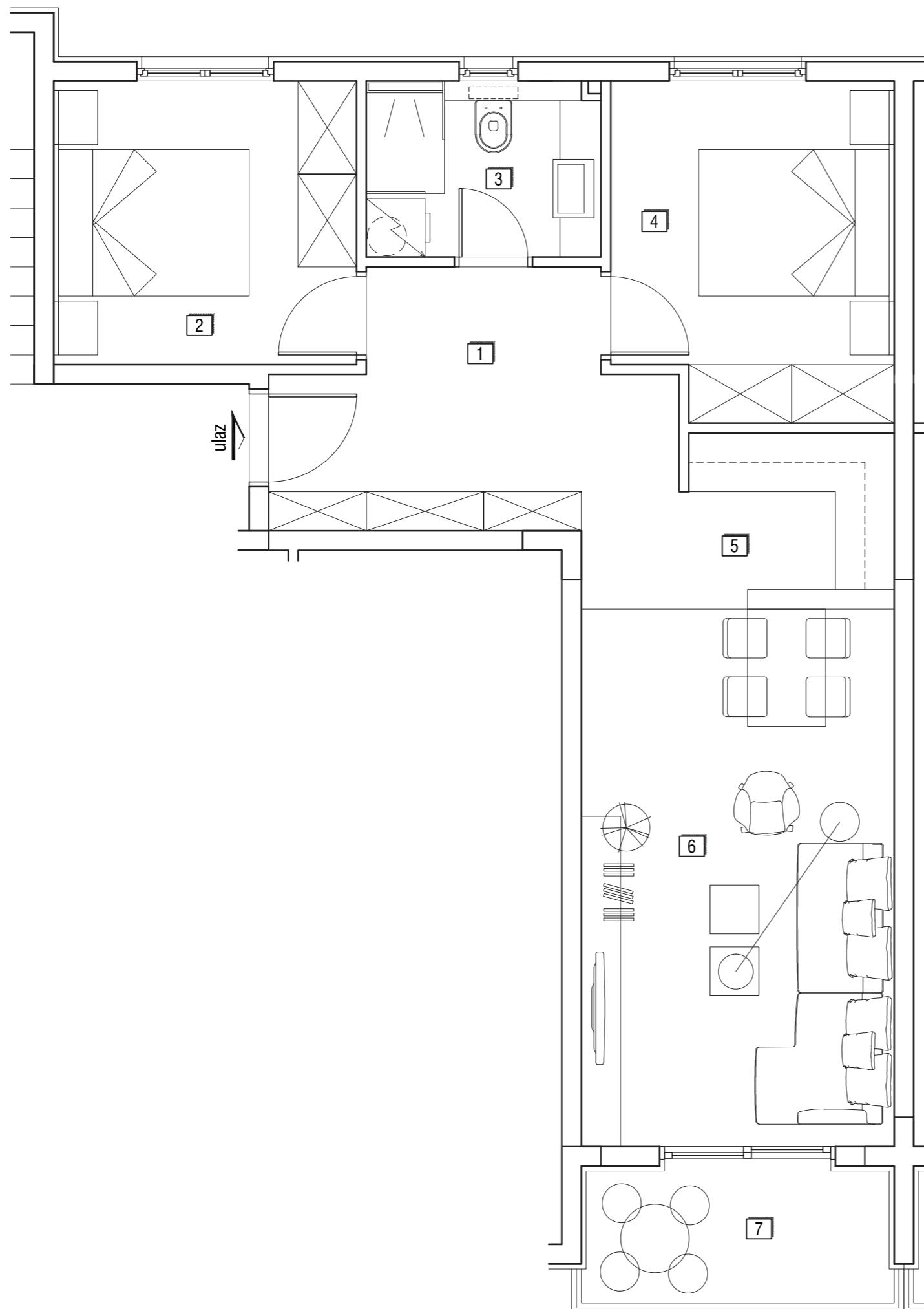
TIPSKI APARTMAN
A06, A11, A16 i A21
I, II, III i IV SPRAT

1	hodnik	keramika	5.99
2	kupatilo 1	keramika	5.18
3	spavaća soba 1	parket	11.60
4	kupatilo 2	keramika	4.33
5	spavaća soba 2	parket	10.50
6	kuhinja	keramika	6.80
7	dn. soba i trpezarija	keramika	20.06
	ukupno bez terasa		64.46
8	terasa	keramika	3.69
	ukupno		68.15



TIPSKI APARTMAN
 A02, A03, A04, B02, B03,
 A07, A08, A09, B06, B07,
 A12, A13, A14, B10, B11,
 A17, A18, A19, B14, B15,
 A22, A23, A24, B18 i B19
 PRIZEMLJE, I, II, III i IV SPRAT

1	hodnik	keramika	3.07
2	kupatilo	keramika	3.70
3	kuhinja	keramika	6.21
4	dn. soba sa trpezarijom	keramika	17.00
5	spavaća soba	parket	10.02
	ukupno bez terasa	keramika	40.00
6	terasa		3.52
	A03 ukupno		43.52



TIPSKI APARTMAN

A04

A10, B05,

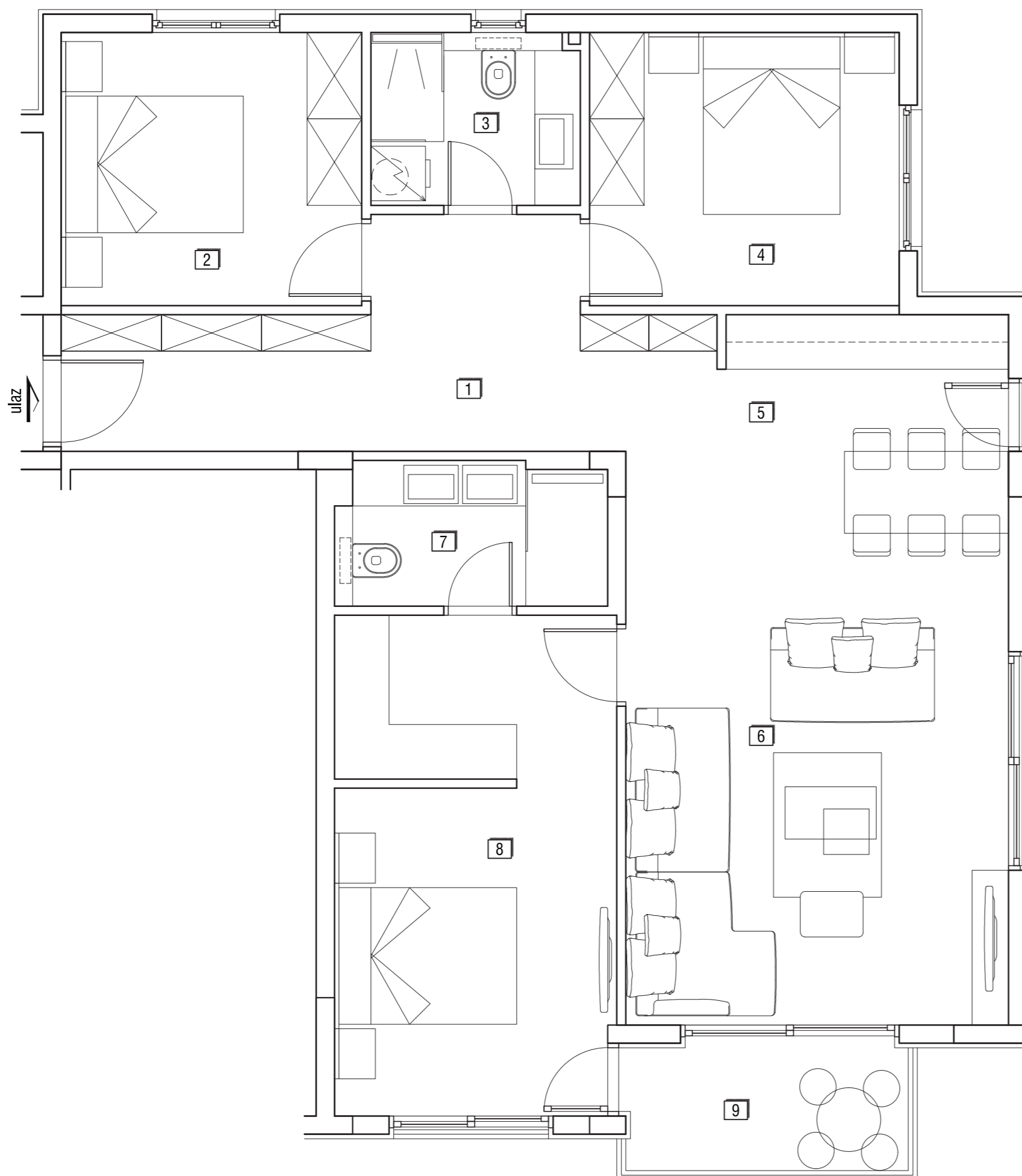
A15, B09,

A20, B13,

A25, B17

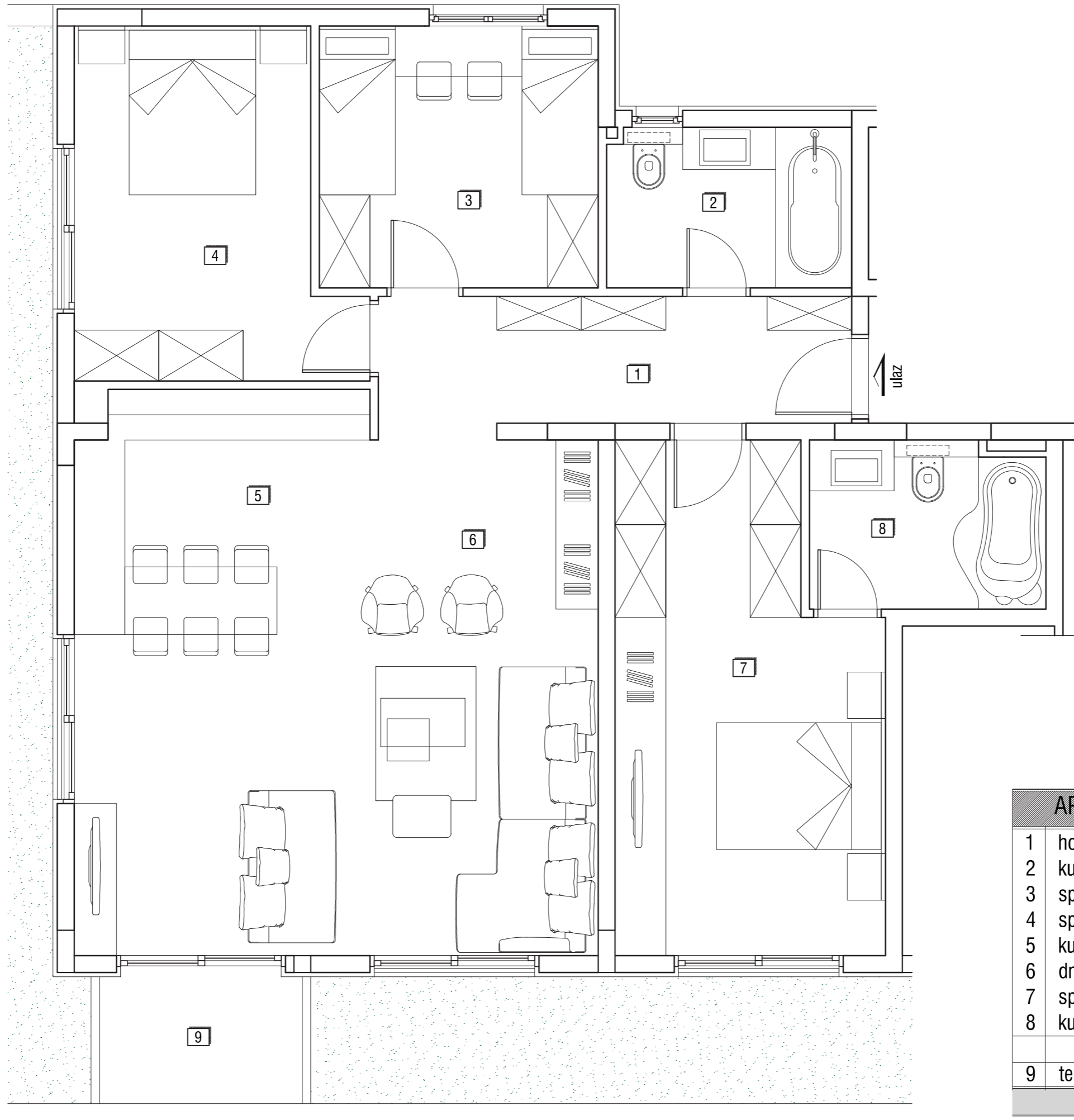
PRIZEMLJE, I, II, III i IV SPRAT

1	hodnik	keramika	8.96
2	spavaća soba 1	parket	8.99
3	kupatilo	keramika	4.28
4	spavaća soba 2	parket	9.67
5	kuhinja	keramika	5.10
6	dn. soba i trpezarija	keramika	17.60
	ukupno bez terasa		54.60
7	terasa	keramika	4.31
	ukupno		58.91

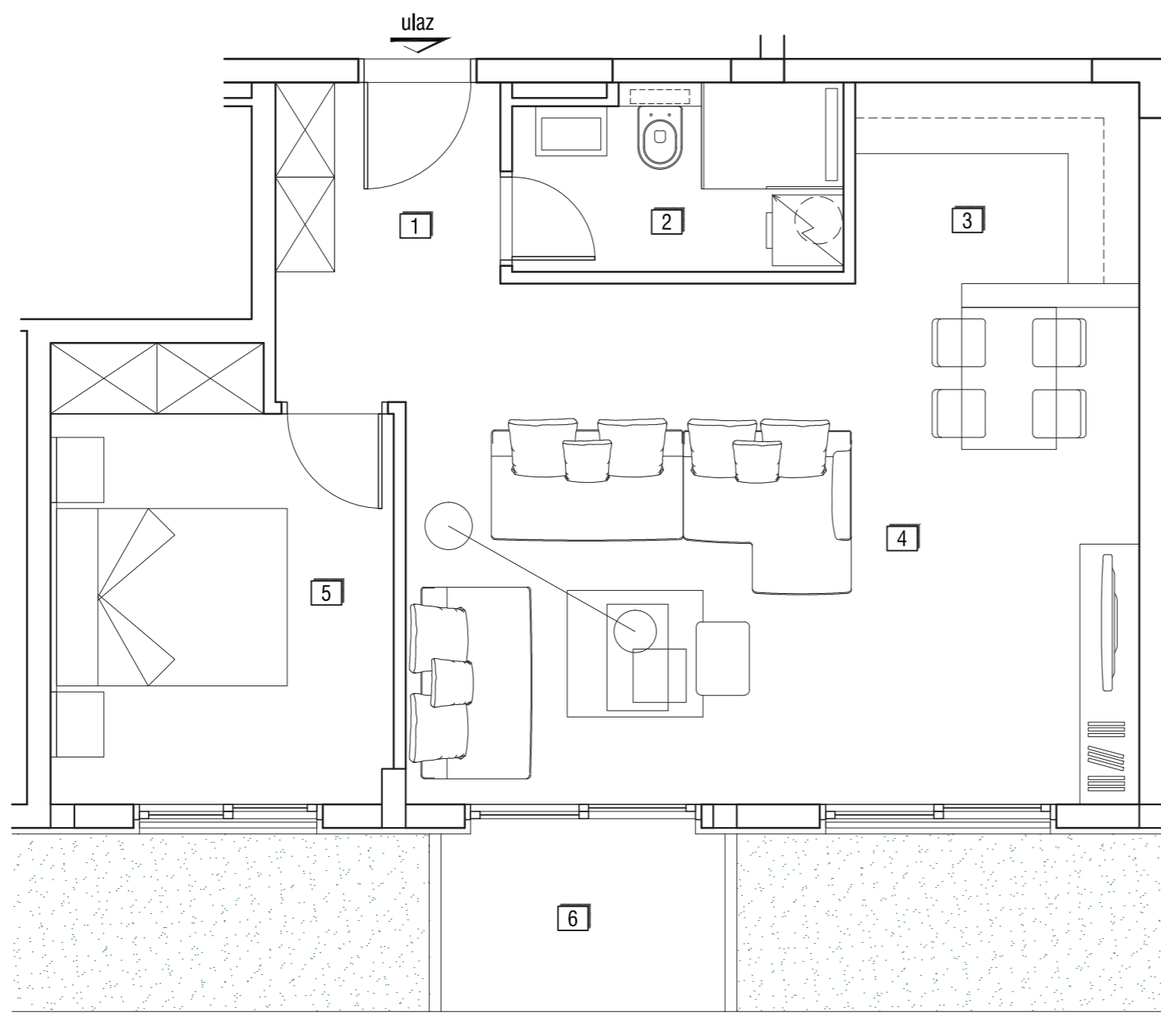


TIPSKI APARTMAN
 B04, B08, B12, B16 i B20
 PRIZEMLJE, I, II, III i IV SPRAT

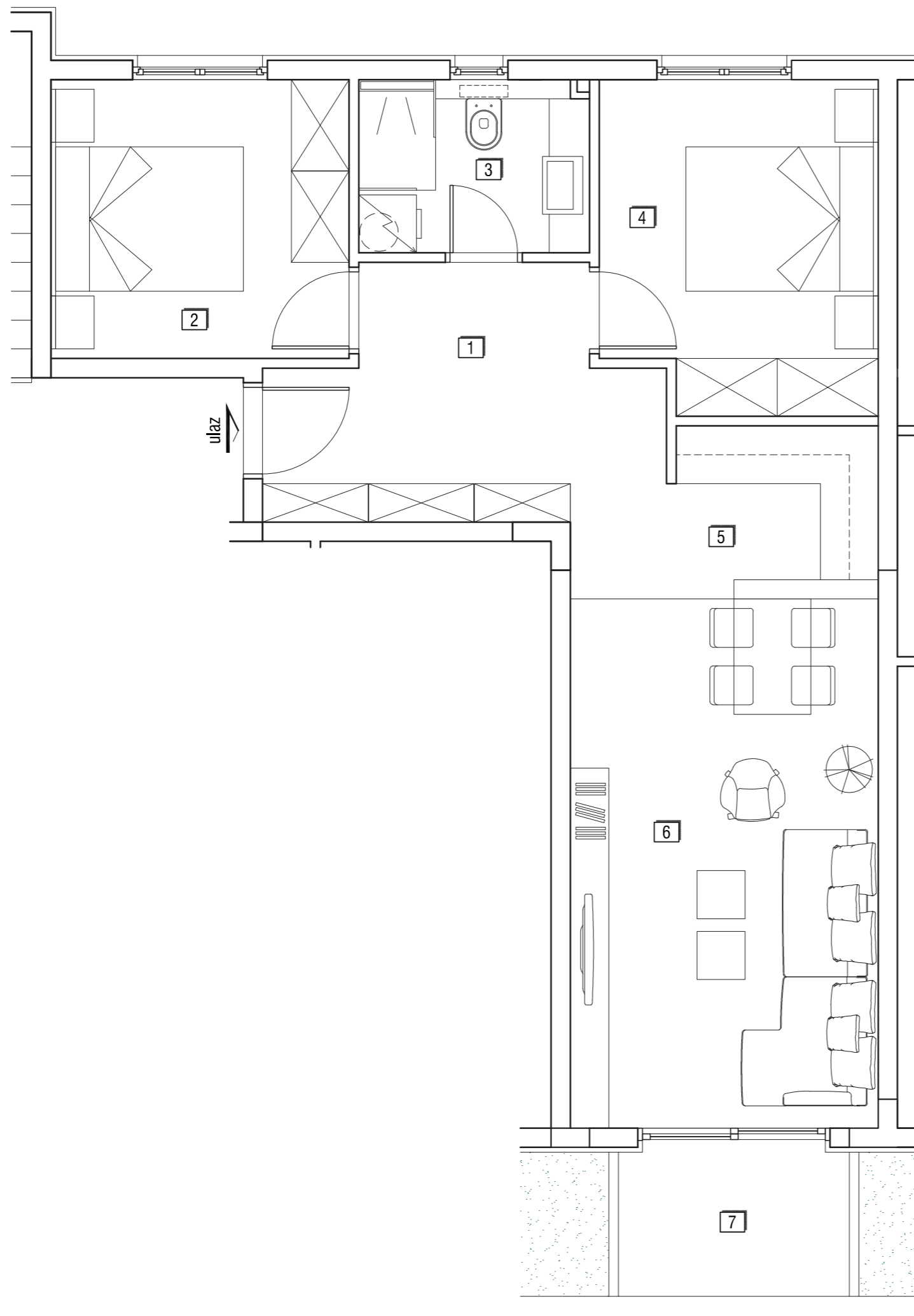
1	hodnik	keramika	13.33
2	spavaća soba 1	parket	9.90
3	kupatilo	keramika	4.33
4	spavaća soba 2	parket	10.20
5	kuhinja	keramika	4.74
6	dn. soba i trpezarija	keramika	26.46
7	kupatilo	keramika	4.61
8	spavaća soba 3	parket	16.75
	ukupno bez terasa		90.32
9	terasa	keramika	4.29
	ukupno		94.61



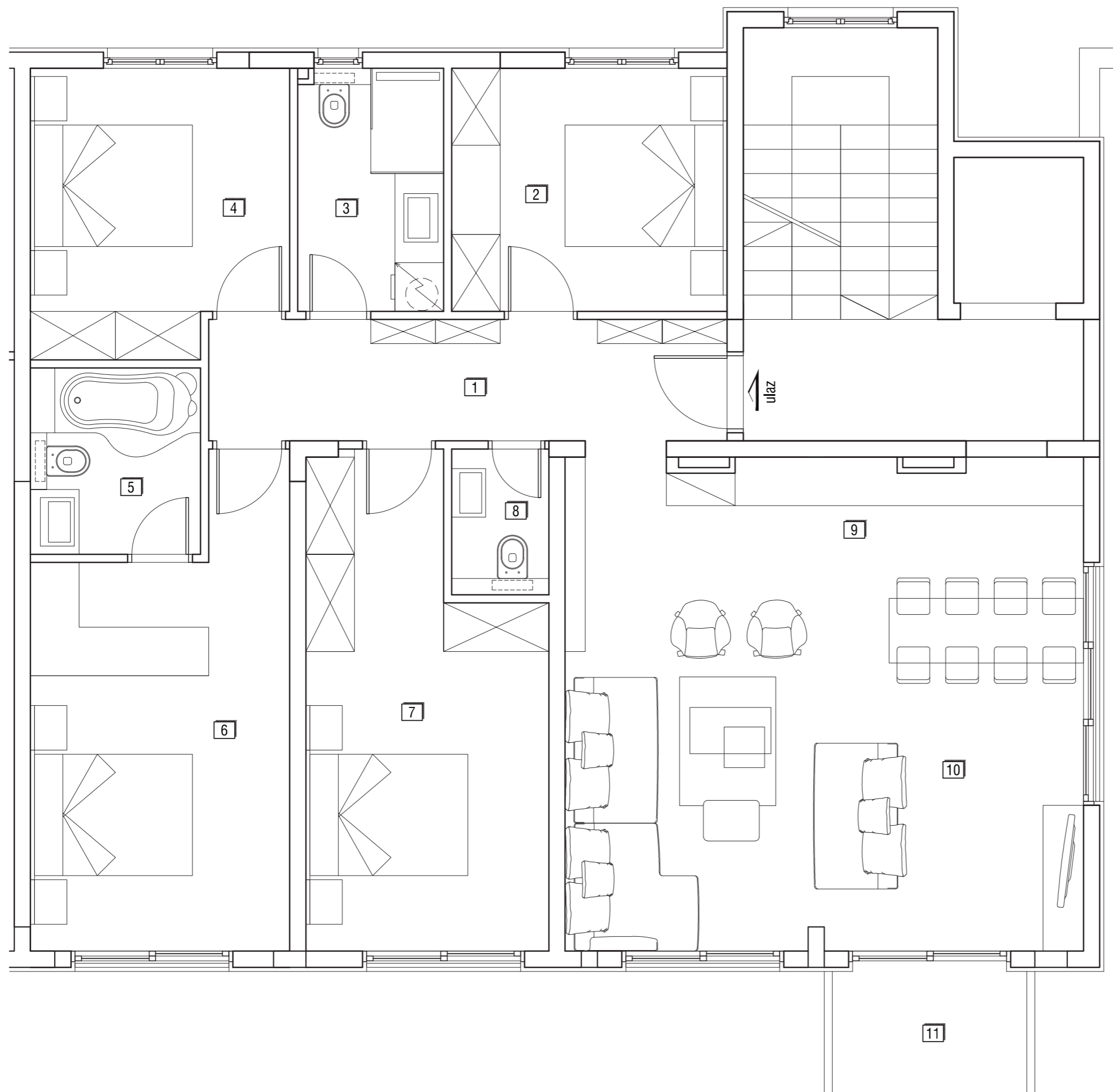
APARTMAN A26 na V spratu			
1	hodnik	keramika	8.68
2	kupatilo 1	keramika	5.47
3	spavaća soba 1	parket	10.23
4	spavaća soba 2	parket	12.46
5	kuhinja i trpezarija	keramika	10.14
6	dn. soba	keramika	29.54
7	spavaća soba 3	parket	17.42
8	kupatilo 2	keramika	5.44
	ukupno bez terasa		99.38
9	terasa	keramika	3.70
	ukupno		103.08



APARTMAN A27 na V spratu			
1	hodnik	keramika	4.33
2	kupatilo	keramika	4.30
3	kuhinja	keramika	4.08
4	dn. soba sa trpezarijom	keramika	27.28
5	spavaća soba	parket	10.62
	ukupno bez terasa	keramika	50.61
6	terasa		3.70
	A03 ukupno		54.31



APARTMAN A28 na V spratu			
1	hodnik	keramika	8.96
2	spavaća soba 1	parket	8.99
3	kupatilo	keramika	4.28
4	spavaća soba 2	parket	9.67
5	kuhinja	keramika	5.10
6	dn. soba i trpezarija	keramika	17.60
	ukupno bez terasa		54.60
7	terasa	keramika	3.70
	ukupno		58.30



APARTMAN B21 na V spratu			
1	hodnik	keramika	9.60
2	spavaća soba 1	parket	10.20
3	kupatilo	keramika	5.36
4	spavaća soba 2	parket	10.86
5	kupatilo	keramika	4.83
6	spavaća soba 3	parket	16.76
7	spavaća soba 4	parket	16.09
8	wc	keramika	2.16
9	kuhinja	keramika	8.18
10	dn.soba i trpezarija	keramika	30.66
	ukupno bez terasa		114.70
11	terasa	keramika	3.70
	ukupno		118.40